

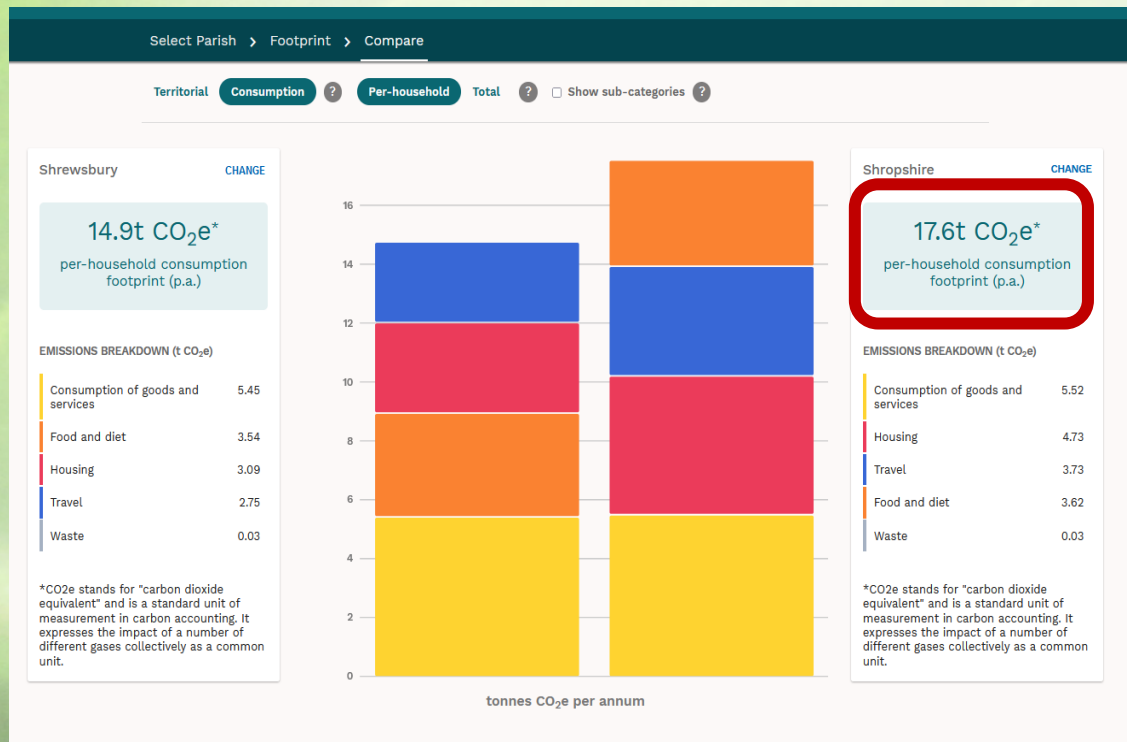
Town Council/Parish council Climate Emergency Plan

How to tackle the Climate Emergency
in your Parish/Town Council

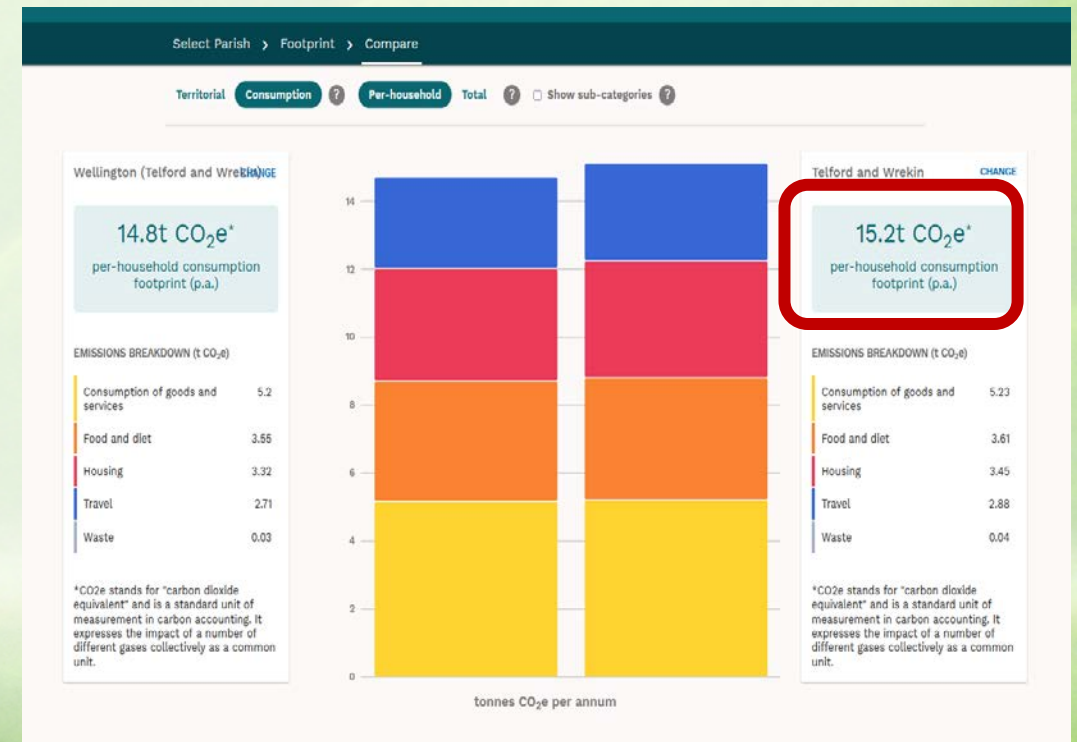
Allan Wilson and Richard Watkins

What is the size of the problem in Shropshire County?

Shropshire Council



Telford and Wrekin council



Source : Centre for Sustainable Energy "Impact" tool 2021



The real source of the problems

Getting people to take action

Community	Number
Households	205,000
Population	502,000
Parish/Town Councils	250



502,000 people in 205,000 households must eat, heat, travel, insulate, waste less, and plant trees to get to net zero by three zero.

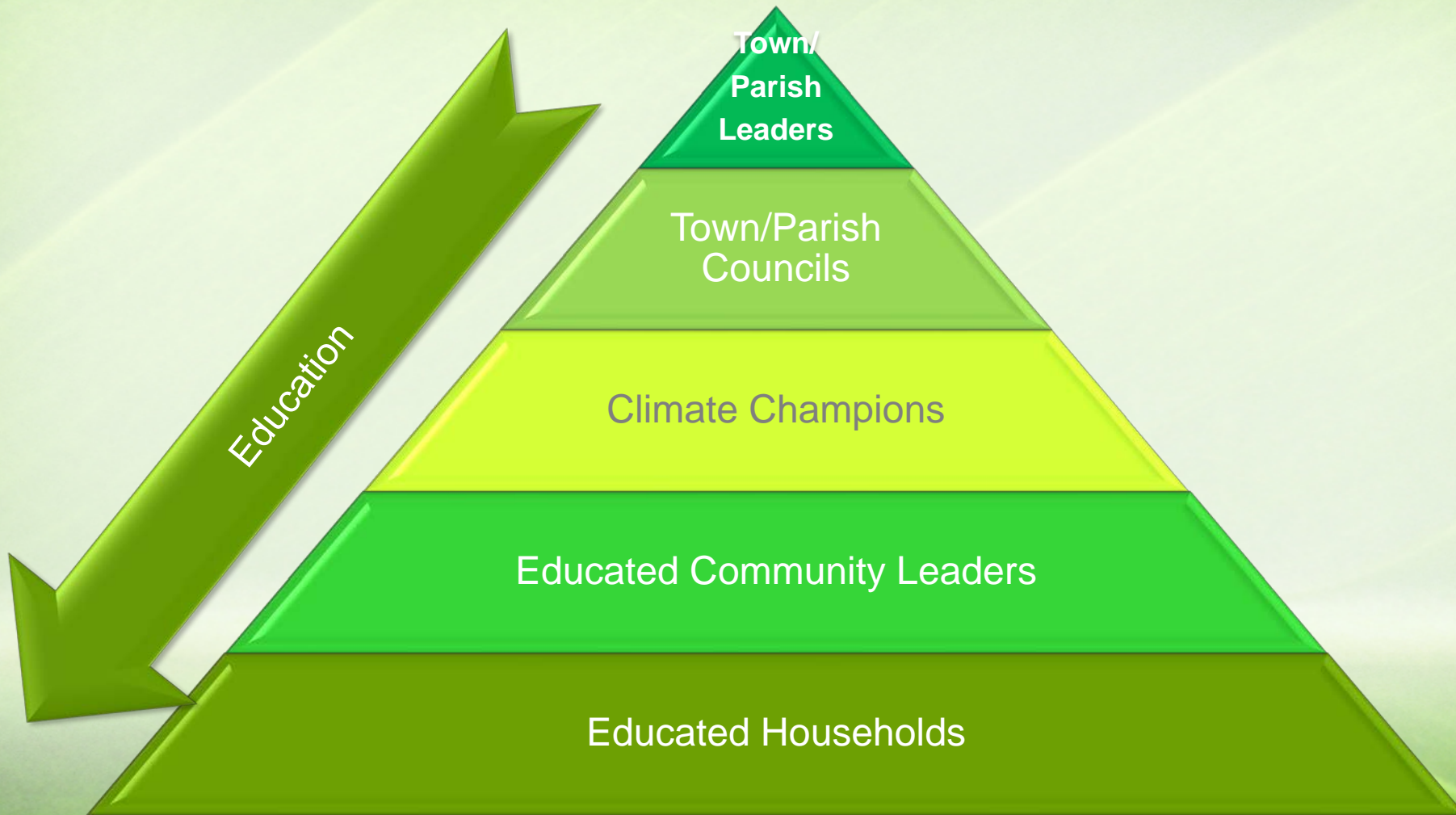
250 parish and town councils can facilitate this.

The process for behaviour change

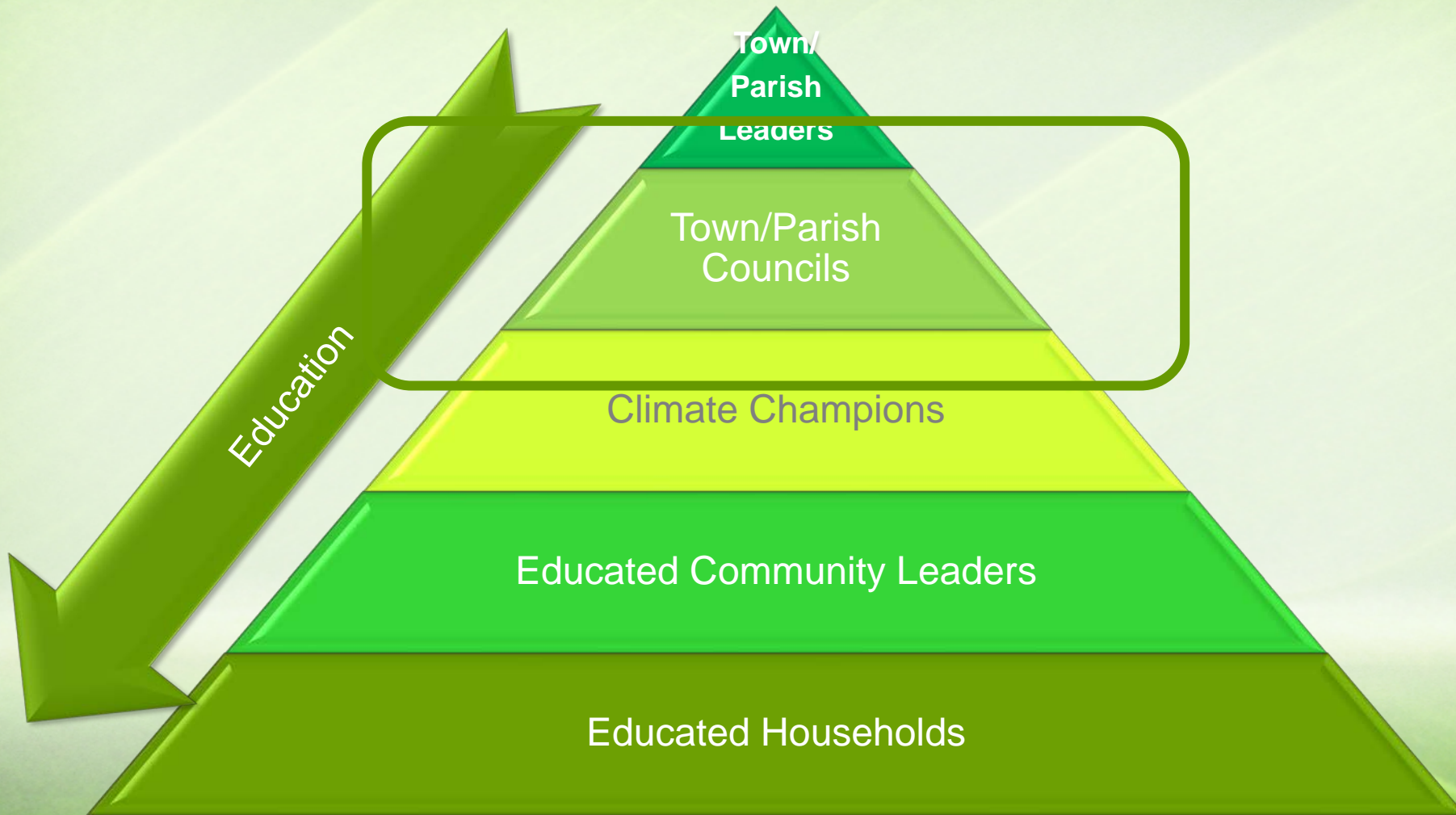
1. Genuine discontent with the present.
2. A clear vision of the future state of life
3. A proven path to walk the steps of the journey to the future state



Cascade Education Approach



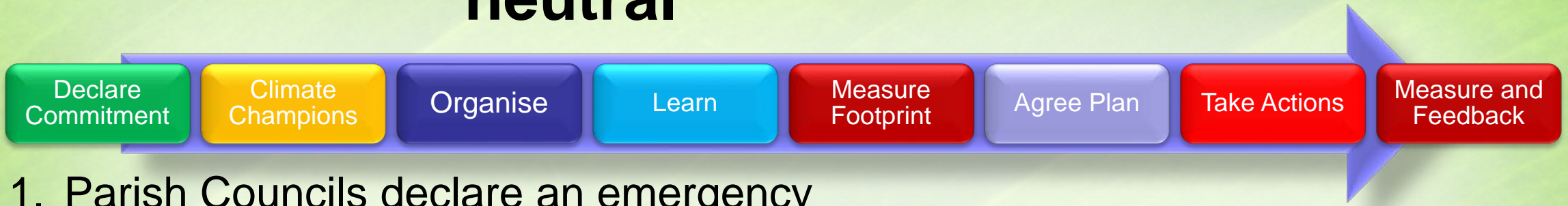
Cascade Education Approach



The journey to success

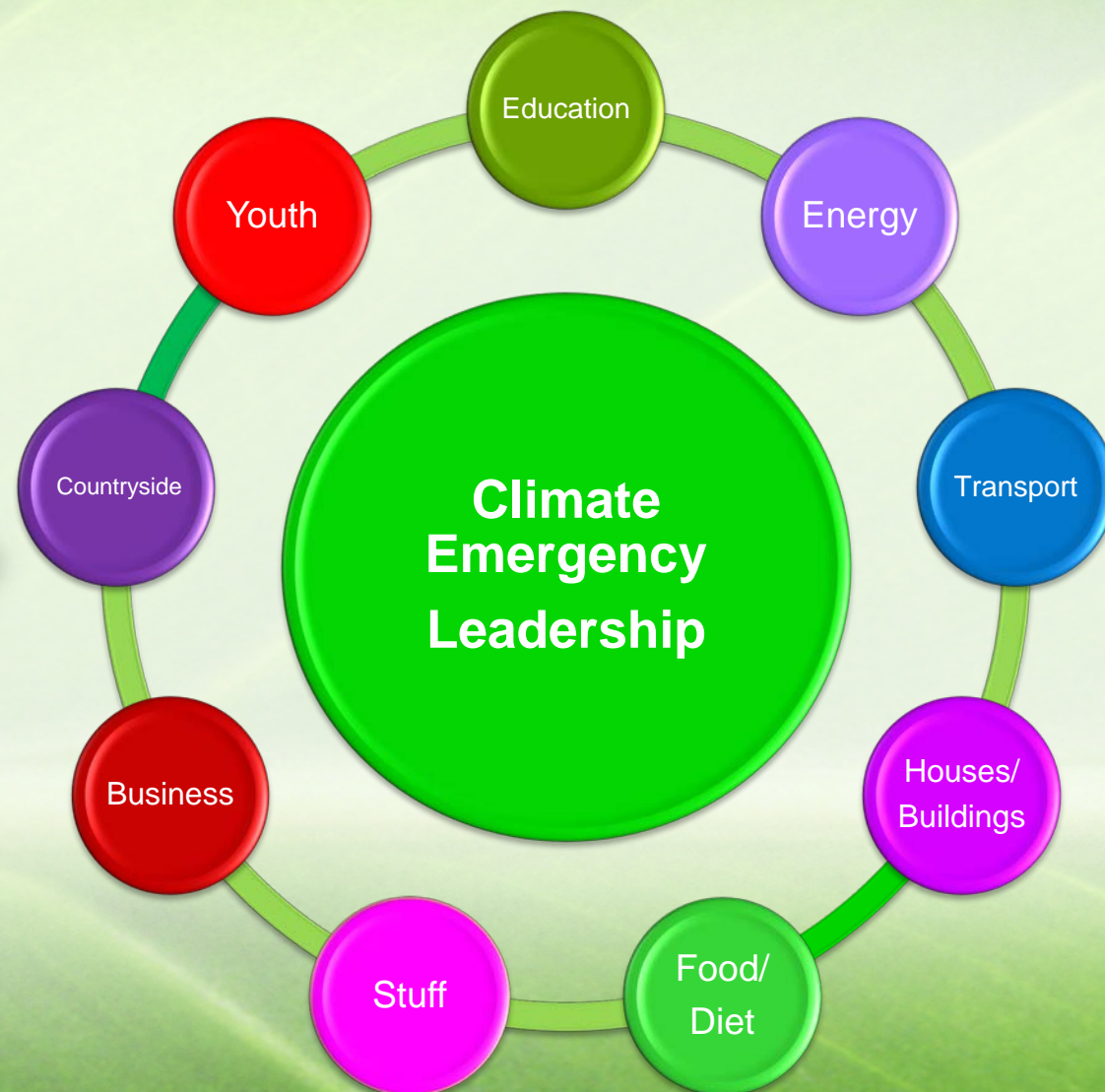
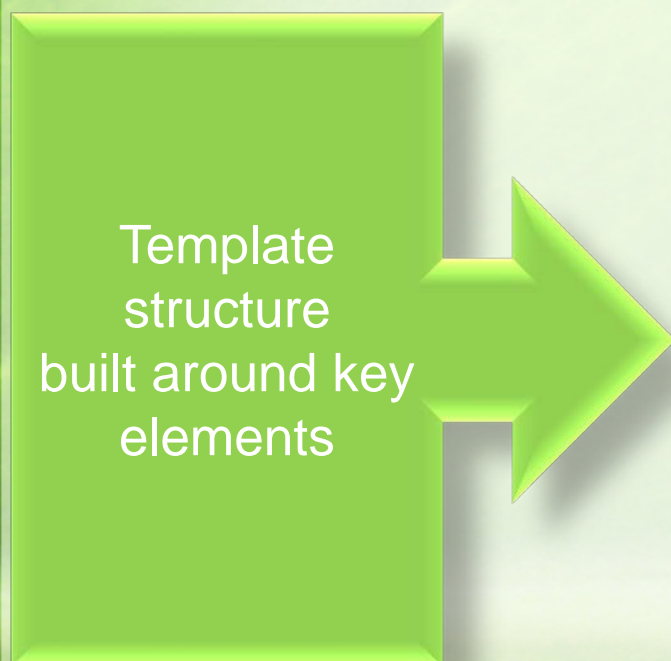


SOS CIO Pathway – 10 steps to neutral



1. Parish Councils declare an emergency
2. Select Climate Emergency Champion(s)
3. Train the Champions
4. Organise for success
5. Train Councillors
6. Measure Initial Footprint
7. Plan and start local actions
8. Engage Community
9. Take actions
10. Measure Footprint – see progress and improve

Organise project around key areas



Education

Aspect		Description
Objective		To increase understanding of impact of Climate Emergency, the actions that need to be taken, and communicate activity through the council areas of activity
Scope	Internal to Council	Educate clerks and all councillors in Climate Emergency through external and internal education media what action needs to be taken
	External to Council	Educate all householders in what action they should take to combat the climate emergency in their lifestyles, and communicate activities being taken.
Outcome		All people within the community are knowledgeable and enthusiastic about taking action to combat the climate emergency and are actively engaged.

Holmfirth - Yorkshire

Holme Valley Climate Action

HOME

LIVE STREAMING

ABOUT US

EVENTS

WASTE & RESOURCES

TRANSPORT ACTION ▼

ENERGY ACTIONS

AGRICULTURE & FOOD

MORE ▼

Holme Valley Parish Council Climate Emergency Action Plan

Making the Holme Valley Carbon Neutral by 2030



Our Team

The Climate Emergency Standing Committee was set up to deliver Holme Valley Parish Council's Climate Emergency Action Plan. The committee combines the work of Parish Councillors and a large group of community volunteers



Our History

After declaring a Climate Emergency on 25th March 2019, Holme Valley Parish Council established a Climate Emergency Standing Committee that pledged the Parish to becoming Carbon Neutral by 2030



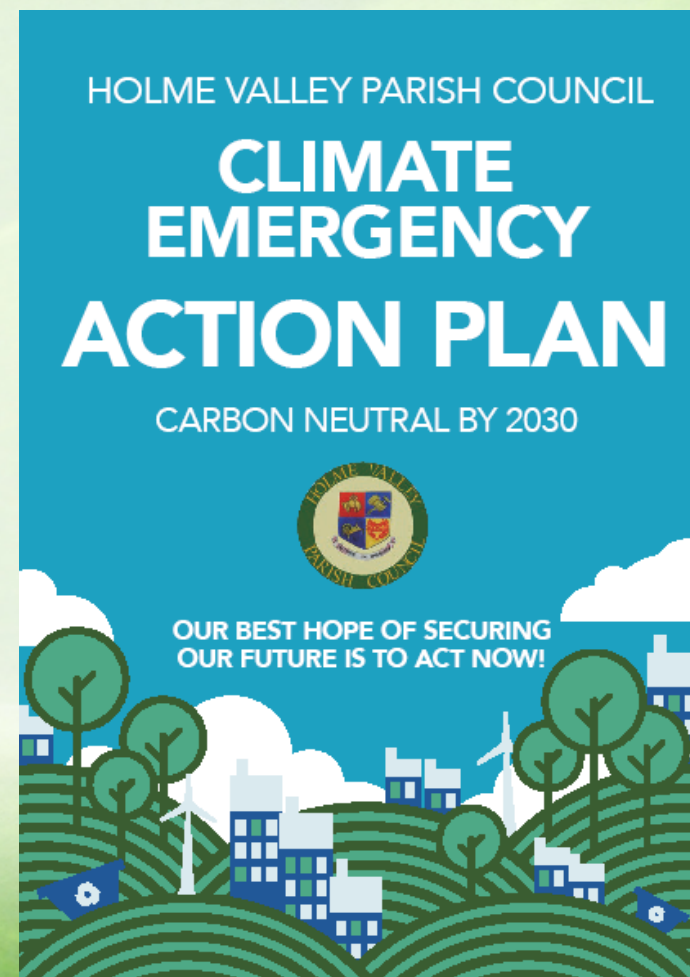
Our Mission

We want to contribute to making our planet safer for ourselves, our children and future generations. The Parish Council has developed this Climate Emergency Action Plan to work together with our community and other levels of government to achieve this aim



Example of Action Plan

Action plan produced by Holme Valley Climate Emergency Committee



Energy

Aspect		Description
Objective		To ensure that the Parish and Town Council support all householders, businesses, schools, and farms switch to using sources of energy for heating and lighting which reduce carbon emissions
Scope	Internal to Council	<ul style="list-style-type: none"> - Electricity supply (use green source) - Lighting sources (e.g. use LED Lights) - Heating sources (e.g. Air Source Heat Pumps)
	External to Council	Support all local entities in using electricity from renewable sources, Support installation of carbon-neutral heating and lighting devices (district network heating, air source heat pumps etc.)
Outcome		All people within the community use carbon-neutral sources of energy supply for electricity and heating.

Sources of information

Organisation	Link
Save Our Shropshire	https://saveourshropshire.org/energy
Marches Energy Agency	https://mea.org.uk/
Cumbria Action for Sustainability	https://cafs.org.uk/cold-to-cosy-homes-cumbria/
Energy Saving Trust	https://energysavingtrust.org.uk

Transport

Aspect		Description
Objective		To ensure that the Parish and Town Council support all householders, businesses, schools, and farms switch to using forms of transport which are carbon neutral
Scope	Internal to Council	<ul style="list-style-type: none"> - Forms of travel used by councillors - Forms of travel used in the completion of council business - Suppliers' vehicles in getting services within council scope
	External to Council	<ul style="list-style-type: none"> - Support all local householders, businesses, schools etc. to use forms of transport that are carbon neutral - Ensure all forms of travel in and out of council are capable of being carbon-neutral
Outcome		All travel in and out of the council area is done through carbon-neutral vehicles/forms of transport.

Sources of information

Organisation	Link
Save Our Shropshire	https://saveourshropshire.org/transport
Cumbria Action for Sustainability	https://cafs.org.uk/sustainable-living-guide/sustainable-tourism-travel/
Next Green Car	https://www.nextgreencar.com/iframes/est/ev/
UK Government cycle to work	https://www.gov.uk/government/news/cycle-to-work-scheme
Car Magazine	https://www.carmagazine.co.uk/electric/best-electric-vans/

Houses/Buildings

Aspect		Description
Objective		To ensure that the Parish and Town Council support all householders, businesses, schools, and farms switch to use and build houses and buildings that have low carbon footprints
Scope	Internal to Council	<ul style="list-style-type: none"> - Buildings owned by Town and Parish council - Houses/Homes managed by the council
	External to Council	<ul style="list-style-type: none"> - Support all local householders, businesses, schools etc. to retrofit and build new buildings which are carbon-neutral - Ensure all buildings within the geographical area of the Town/Parish council are carbon-neutral
Outcome		All buildings are insulated properly, and built with the right standard of materials to ensure low carbon dioxide and similar emissions.

Sources of information

Organisation	Link
Save Our Shropshire	https://saveourshropshire.org/cosier-buildings
Marches Energy Agency	https://mea.org.uk/
Cumbria Action for Sustainability	https://cafs.org.uk/cold-to-cosy-homes-cumbria/
Energy Saving Trust	https://energysavingtrust.org.uk/energy-at-home/reducing-home-heat-loss/ https://energysavingtrust.org.uk/business/energy-efficiency/

Food/Diet

Aspect		Description
Objective		To ensure that the Parish and Town Council support all householders, businesses, schools, and farms switch to eating a diet which is more plant-bases and minimises total carbon emissions
Scope	Internal to Council	<ul style="list-style-type: none"> - Parish/Town councillors - Eating on council premises
	External to Council	<ul style="list-style-type: none"> - Support all local householders, businesses, schools etc. to eat a diet which is locally sourced, and more plant-based - Ensure all schools, farms, and households change to a carbon-neutral diet.
Outcome		All people within or passing through the council area eat a carbon-neutral diet wherever and whenever possible.

Sources of information

Organisation	Link
Save Our Shropshire	https://saveourshropshire.org/food
Holme Valley Climate Action Partnership	https://holmevalleyclimateaction.co.uk/actions/agriculture-and-food/
Cumbria Action for Sustainability	https://cafs.org.uk/sustainable-living-guide/sustainable-food/
BBC	https://www.bbcgoodfood.com/howto/guide/what-is-the-planetary-health-diet

Stuff

Aspect		Description
Objective		To ensure that the Parish and Town Council support all householders, businesses, schools, and farms switch to buying in a way that minimises the impact on the planet in what we buy and what we throwaway.
Scope	Internal to Council	<ul style="list-style-type: none"> - Items purchased by the Parish/Town council - Waste created by the Parish/Town council
	External to Council	<ul style="list-style-type: none"> - Support all local householders, businesses, schools etc. to buy items which will last and which do not create a high carbon footprint - Encourage repair, reuse and recycling through the community – e.g. through the creation of a repair cafe
Outcome		All people within or passing through the council area buy in a carbon-neutral way, and do not waste items which will harm the atmosphere.

Sources of information

Organisation	Link
Save Our Shropshire	https://saveourshropshire.org/stuff
Holme Valley Climate Action Partnership	https://holmevalleyclimateaction.co.uk/actions/waste-and-resources/
Cumbria Action for Sustainability	https://cafs.org.uk/sustainable-living-guide/sustainable-ethical-shopping-guide/
Time Travel Bee	https://timetravelbee.com/bee-eco/responsible-shopping-guide/
BBC Shop Well for the planet	https://www.bbc.co.uk/food/programmes/m00110g3 (iPlayer 60 minute programme)

Business

Aspect		Description
Objective		To ensure that the Parish and Town Council support all businesses to operate in a carbon-neutral way, and buy and sell products which have a carbon-neutral supply chain.
Scope	Internal to Council	<ul style="list-style-type: none"> - Interaction with local businesses and business people in what they buy and sell - Waste created by the Parish/Town council
	External to Council	<ul style="list-style-type: none"> - Support all local businesses to understand and operate in a carbon-neutral manner - Encourage companies supplying business in their area to sell, buy and transport products in a carbon-neutral way
Outcome		All businesses operate in a way that minimises their carbon footprint

Sources of information

Organisation	Link
Save Our Shropshire	https://saveourshropshire.org/sme-business-course
Holme Valley Climate Action Partnership	https://holmevalleyclimateaction.co.uk/actions/economy-and-business/
Cumbria Action for Sustainability	https://cafs.org.uk/for-businesses/

Countryside

Aspect		Description
Objective		To ensure that the Parish and Town Council support the development of the countryside to protect local wildlife and encourage tree planting to support absorption of Carbon Dioxide
Scope	Internal to Council	<ul style="list-style-type: none"> - Land/recreation sites owned by Parish/Town council - Sites owned by Parish/Town Council
	External to Council	<ul style="list-style-type: none"> - Support all local communities to protect flowers, animals and woodland to support biodiversity - Support development of open land to grow trees which support the absorption of greenhouse gases.
Outcome		Countryside animals, insects, flowers and woodland developed to ensure effective protection of species from adverse effect caused by humans.

Sources of information

Organisation	Link
Save Our Shropshire	https://saveourshropshire.org/country
Holme Valley Climate Action Partnership	https://holmevalleyclimateaction.co.uk/actions/environment-and-land-use/
Cumbria Action for Sustainability	https://cafs.org.uk/our-projects/cumbria-green-build-sustainable-living-festival/

Youth

Aspect		Description
Objective		To ensure that the Parish and Town Council support all schools, colleges and universities in their area to operate in a carbon-neutral way, and engage children and young people in learning to live a carbon-neutral lifestyle
Scope	Internal to Council	<ul style="list-style-type: none"> - Interaction with local schools - Interaction with parents
	External to Council	<ul style="list-style-type: none"> - All schools and universities within the geographical area - All youth activities in the area (cubs, scouts, sports activities)
Outcome		All school children grow up being aware of the right things to do to keep the planet carbon-neutral and how to become carbon negative in the future.

Sources of information

Organisation	Link
Save Our Shropshire	https://saveourshropshire.org/future-gens
Cumbria Action for Sustainability	https://cafs.org.uk/our-projects/youth-climate-action/
Bristol Green Capital	https://bristolgreencapital.org/wp-content/uploads/2019/05/30_bristol_method_how_to_engage_and_empower_young_people-1.pdf

Template Project Plan

Template Project Plan built around the above and other plans. Click on it to open

		Month1 Month2 Month3 Month4 Month5 Month6 Month7 Month8 Month9 Month10 Month11 Month12 Month13												
PHASE OR GROUP		Time	Cost											
- Leadership/Management														
	Declare emergency/commitment													
	Establish Organisation													
	Set up communications													
	Establish Monthly meetings													
	Create and review plan													
- Measure and Establish footprint														
	Calculate Impact tool													
	Get a sample audit using tool													
- Education														
	Parish Clerk and champions													
	All councillors internal course													
	Key Householders													
	20 % of all householders													
	80 % of households													
- Energy														
Internal														
	Replace lighting with LEDs													
	Make energy contract "Green"													
	Install Solar panels													
	Install Air source heat pump													
External														
	Support development of Solar/Wind													
	Ensure New build based on Green Energy													
	Encourage householders to buy green													
	Create local energy networks													
- Transport														
Internal														
External														
- Houses/Buildings														
Internal														

Case Study of a village

1. The following video describes a pioneering project to reduce the carbon footprint of a village and is really useful.
2. In the UK, Ashton Hayes, in Cheshire decided to become a zero-carbon community. They managed to reduce the carbon emissions in the village by more than 20% in the first 2 years, mainly through behaviour change.

How Ashton Hayes became first carbon-neutral village



The photograph shows a man with white hair, wearing a blue sweater, standing in front of a large poster. The poster has a yellow circular logo with the letters 'CAFS' and text below it that reads: 'Carbon Footprinting: A Guide to Reducing Your Carbon Footprint'. The man is smiling and gesturing towards the poster. The background is a plain wall.

A GREENER CLIMATE
ZERO

