

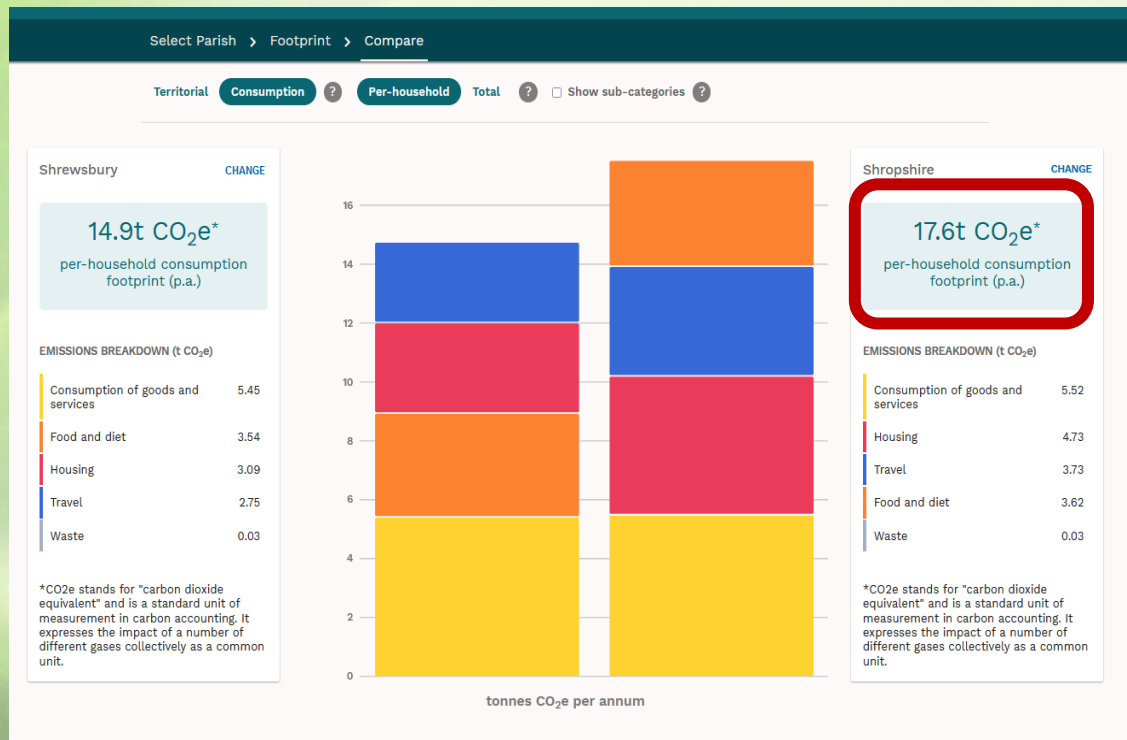
Town Council/Parish council Climate Emergency Plan

How to tackle the Climate Emergency
in your Parish/Town Council

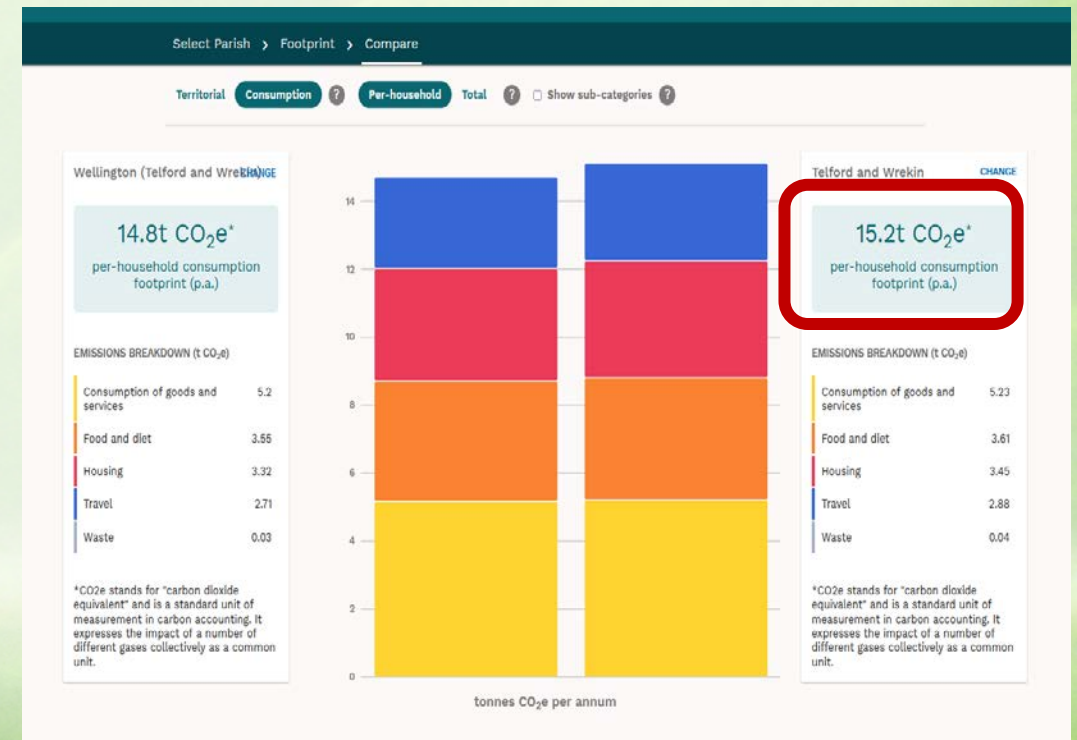
Allan Wilson and Richard Watkins

What is the size of the problem in Shropshire County?

Shropshire Council



Telford and Wrekin council



Source : Centre for Sustainable Energy "Impact" tool 2021



The real source of the problems

Getting people to take action

Community	Number
Households	205,000
Population	502,000
Parish/Town Councils	185



502,000 people in 205,000 households must eat, heat, travel, insulate, waste less, and plant trees to get to net zero by three zero.

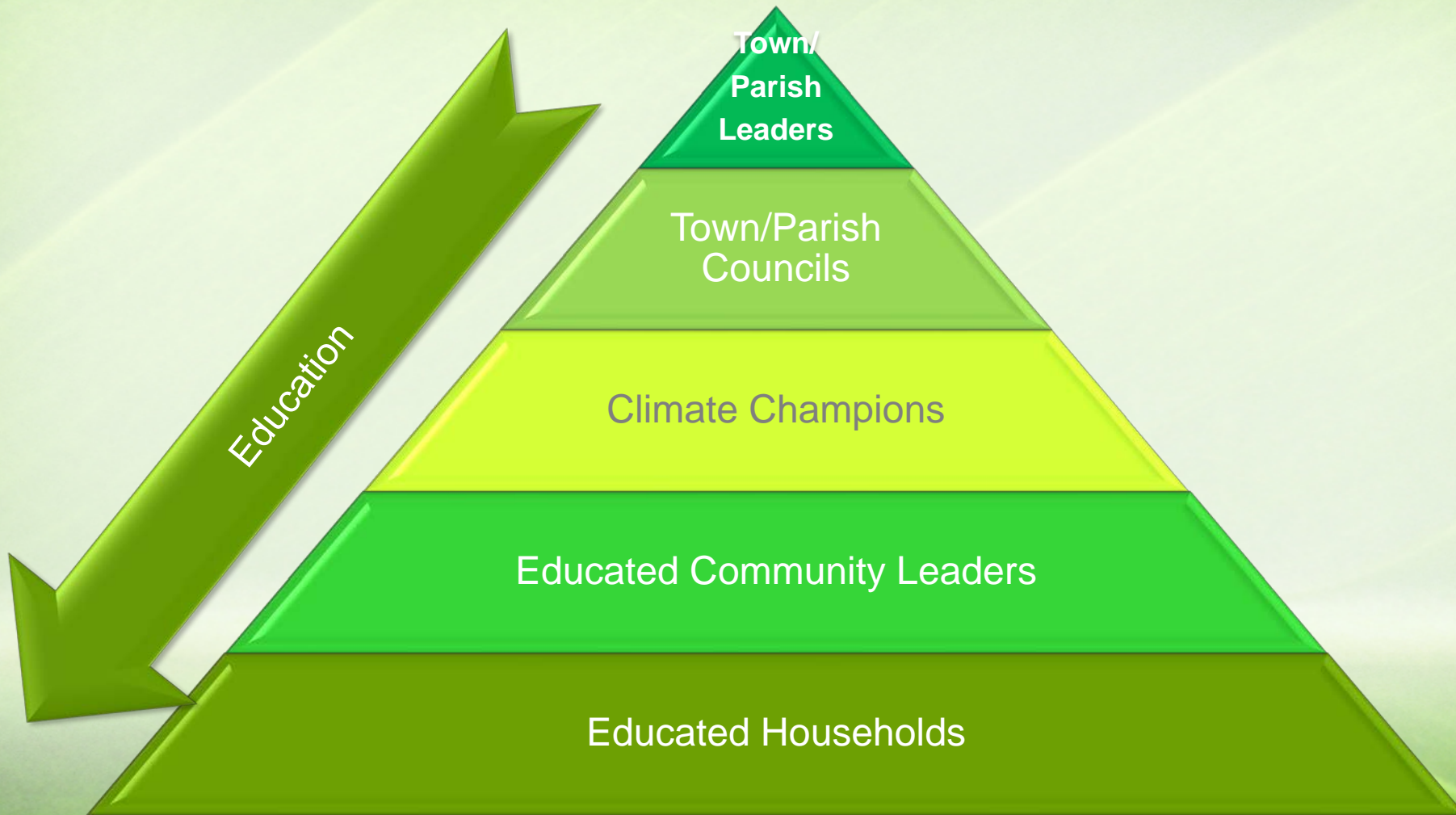
250 parish and town councils can facilitate this.

The process for behaviour change

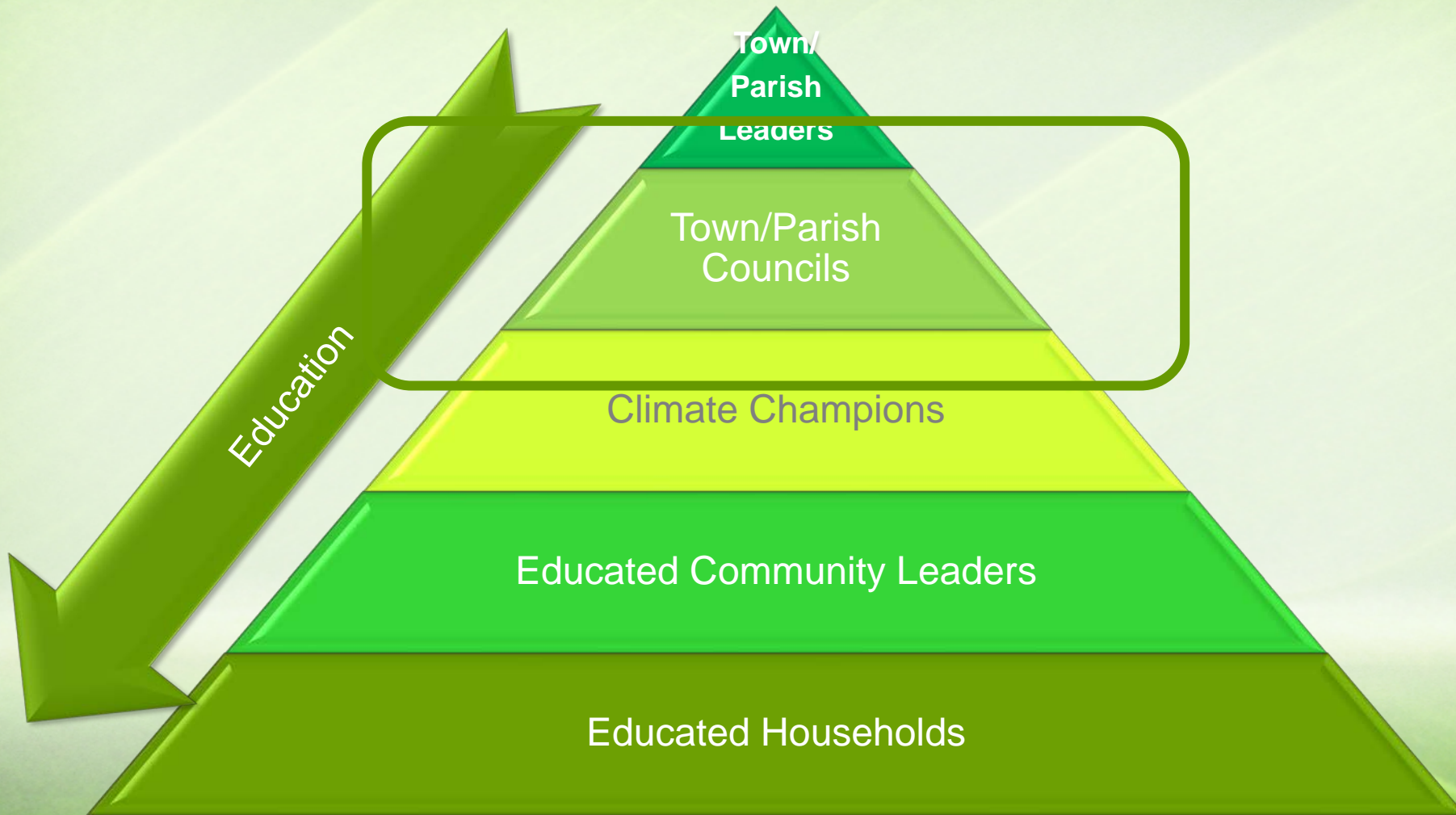
1. Genuine discontent with the present.
2. A clear vision of the future state of life
3. A proven path to walk the steps of the journey to the future state



Cascade Education Approach



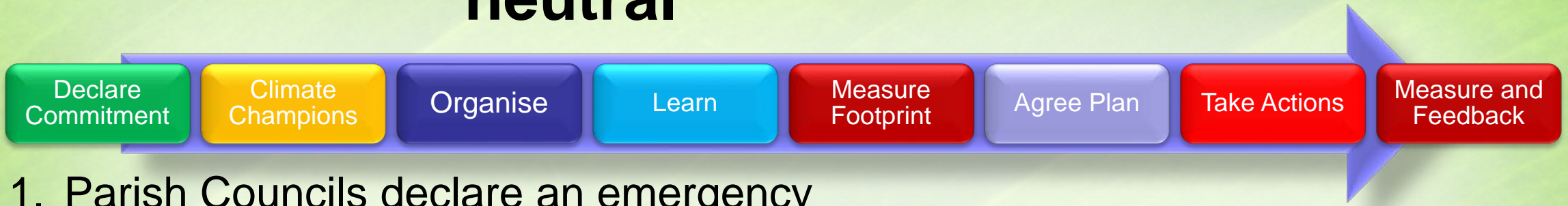
Cascade Education Approach



The journey to success

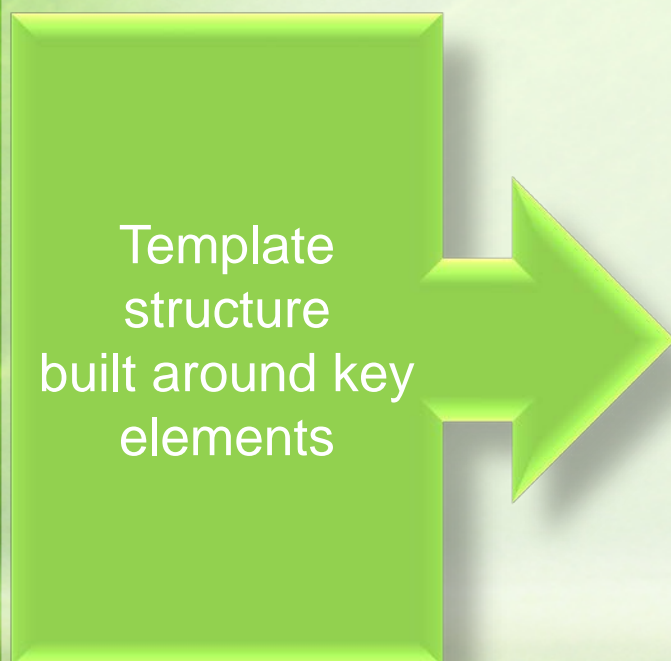


SOS CIO Pathway – 10 steps to neutral



1. Parish Councils declare an emergency
2. Select Climate Emergency Champion(s)
3. Train the Champions
4. Organise for success
5. Train Councillors
6. Measure Initial Footprint
7. Plan and start local actions
8. Engage Community
9. Take actions
10. Measure Footprint – see progress and improve

Organise project around key areas



Education

Aspect		Description
Objective		To increase understanding of impact of Climate Emergency, the actions that need to be taken, and communicate activity through the council areas of activity
Scope	Internal to Council	Educate clerks and all councillors in Climate Emergency through external and internal education media what action needs to be taken
	External to Council	Educate all householders in what action they should take to combat the climate emergency in their lifestyles, and communicate activities being taken.
Outcome		All people within the community are knowledgeable and enthusiastic about taking action to combat the climate emergency and are actively engaged.

Sources of information

Organisation	Link
Save Our Shropshire	https://saveourshropshire.org/workshops
Carbon Literacy Project	https://carbonliteracy.com/
Centre for Alternative Technology	https://cat.org.uk/courses-and-training/
Speak Carbon	https://speakcarbon.earth/

Holmfirth - Yorkshire

Holme Valley Climate Action

HOME

LIVE STREAMING

ABOUT US

EVENTS

WASTE & RESOURCES

TRANSPORT ACTION ▼

ENERGY ACTIONS

AGRICULTURE & FOOD

MORE ▼

Holme Valley Parish Council Climate Emergency Action Plan

Making the Holme Valley Carbon Neutral by 2030



Our Team

The Climate Emergency Standing Committee was set up to deliver Holme Valley Parish Council's Climate Emergency Action Plan. The committee combines the work of Parish Councillors and a large group of community volunteers



Our History

After declaring a Climate Emergency on 25th March 2019, Holme Valley Parish Council established a Climate Emergency Standing Committee that pledged the Parish to becoming Carbon Neutral by 2030



Our Mission

We want to contribute to making our planet safer for ourselves, our children and future generations. The Parish Council has developed this Climate Emergency Action Plan to work together with our community and other levels of government to achieve this aim

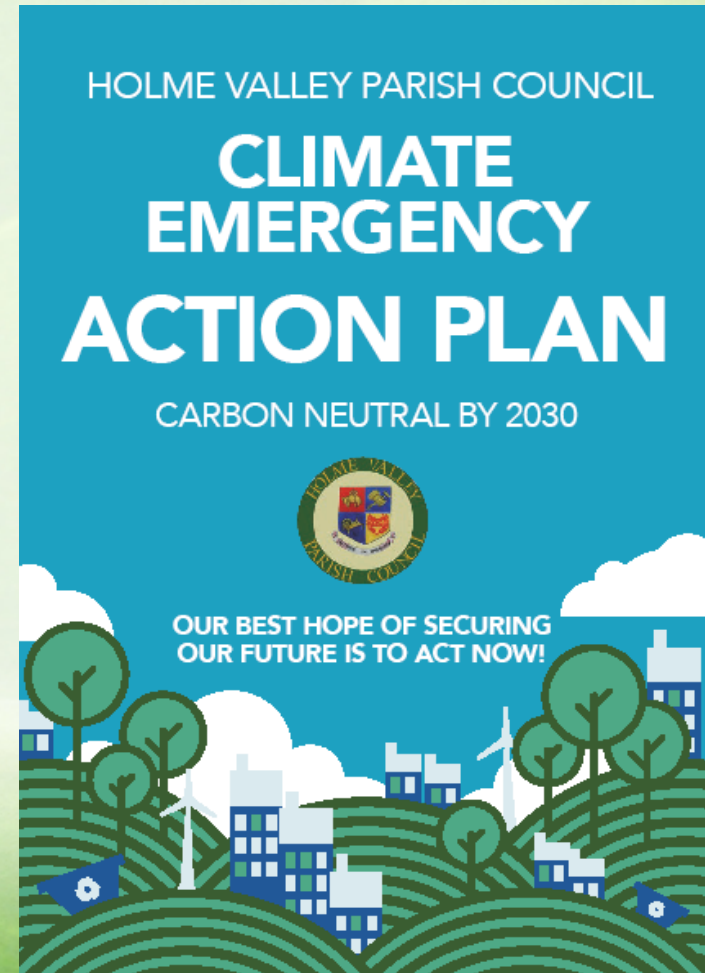


Shrewsbury Town Action Plan

	Shrewsbury Town Council Climate Emergency Action Plan	S/M/L Term S - 2019/20 M - 2020/25 L - 2025-2030	Time	Cost	Likely Impact on Carbon
Mobilisation & Leadership					
1	Organisational Review of Policies to align with Climate Emergency Commitment	Short	⌚ ⌚	£	
2	Publicise key elimination commitment	Ongoing	⌚	£	
3	Join Global Covenant of Mayors	Short	⌚	£	
4	Write to Sec State DEFRA	Short	⌚	£	
5	Climate Emergency Page on Website	Short	⌚	£	
6	Make reference to Climate Emergency and need for renewable energy measures when commenting on planning applications	Short	⌚	£	
7	Add Climate Emergency References in all Invitations for Tender and add to the evaluation process	Short	⌚	£	
Energy Efficiency					
8	Undertake Carbon Footprint Audit	Short	⌚ ⌚ ⌚	££	
9	Purchase appliances with high energy efficiency rating	Medium	⌚ ⌚	£££	
10	Undertake a Buildings Audit to ascertain any efficiency measures	Short	⌚ ⌚	££	
11	Replace Street Light heads with LED	Short	⌚ ⌚	££££	
12	Review Investment Schedule for replacement vehicles, plant & machinery	Medium	⌚ ⌚	££	
Renewable Energy					
13	Review energy provider renewable energy commissioning	Medium	⌚	£	
14	Explore potential for installing Solar/Wind mitigating measures on Council Land/Buildings	Long	⌚ ⌚ ⌚ ⌚ ⌚ ⌚	£££££	
Zero Emissions Transport					
15	Explore electric Vehicle options for fleet	Long	⌚ ⌚ ⌚ ⌚ ⌚ ⌚	£££££	
16	Explore infrastructure requirements and power capacity for electric vehicles	Long	⌚ ⌚ ⌚ ⌚ ⌚ ⌚	£££££	
17	Improve pathways and encourage walking & cycling	Medium	⌚ ⌚ ⌚	££££	
18	Explore the need and level of bicycle storage in town council premises	Medium	⌚ ⌚	£££	
19	Source local materials rather than from a distance	Ongoing	⌚ ⌚	£	
20	Investigate more remote working and flexible working patterns of staff	Medium	⌚ ⌚ ⌚	£	
21	Review the Council's Mileage Policy to determine most efficient mechanism for staff to travel around	Short	⌚ ⌚	£	

Example of Parish Action Plan

Action plan produced by Holme Valley Climate Emergency Committee



Energy

Aspect		Description
Objective		To ensure that the Parish and Town Council support all householders, businesses, schools, and farms switch to using sources of energy for heating and lighting which reduce carbon emissions
Scope	Internal to Council	<ul style="list-style-type: none"> - Electricity supply (use green source) - Lighting sources (e.g. use LED Lights) - Heating sources (e.g. Air Source Heat Pumps)
	External to Council	Support all local entities in using electricity from renewable sources, Support installation of carbon-neutral heating and lighting devices (district network heating, air source heat pumps etc.)
Outcome		All people within the community use carbon-neutral sources of energy supply for electricity and heating.

Sources of information

Organisation	Link
Shropshire Council	https://shropshire.gov.uk/shropshire-climate-action/energy-and-heating/
Save Our Shropshire	https://saveourshropshire.org/energy
Marches Energy Agency	https://mea.org.uk/
Cumbria Action for Sustainability	https://cafs.org.uk/cold-to-cosy-homes-cumbria/
Energy Saving Trust	https://energysavingtrust.org.uk

Transport

Aspect		Description
Objective		To ensure that the Parish and Town Council support all householders, businesses, schools, and farms switch to using forms of transport which are carbon neutral
Scope	Internal to Council	<ul style="list-style-type: none"> - Forms of travel used by councillors - Forms of travel used in the completion of council business - Suppliers' vehicles in getting services within council scope
	External to Council	<ul style="list-style-type: none"> - Support all local householders, businesses, schools etc. to use forms of transport that are carbon neutral - Ensure all forms of travel in and out of council are capable of being carbon-neutral
Outcome		All travel in and out of the council area is done through carbon-neutral vehicles/forms of transport.

Sources of information

Organisation	Link
Shropshire Council	https://shropshire.gov.uk/shropshire-climate-action/transport/
Save Our Shropshire	https://saveourshropshire.org/transport
Cumbria Action for Sustainability	https://cafs.org.uk/sustainable-living-guide/sustainable-tourism-travel/
Next Green Car	https://www.nextgreencar.com/iframes/est/ev/
UK Government cycle to work	https://www.gov.uk/government/news/cycle-to-work-scheme
Car Magazine	https://www.carmagazine.co.uk/electric/best-electric-vans/

Houses/Buildings

Aspect		Description
Objective		To ensure that the Parish and Town Council support all householders, businesses, schools, and farms switch to use and build houses and buildings that have low carbon footprints
Scope	Internal to Council	<ul style="list-style-type: none"> - Buildings owned by Town and Parish council - Houses/Homes managed by the council
	External to Council	<ul style="list-style-type: none"> - Support all local householders, businesses, schools etc. to retrofit and build new buildings which are carbon-neutral - Ensure all buildings within the geographical area of the Town/Parish council are carbon-neutral
Outcome		All buildings are insulated properly, and built with the right standard of materials to ensure low carbon dioxide and similar emissions.

Sources of information

Organisation	Link
Save Our Shropshire	https://saveourshropshire.org/cosier-buildings
Shropshire Council	https://shropshire.gov.uk/shropshire-climate-action/energy-and-heating/home-efficiency/
Marches Energy Agency	https://mea.org.uk/
Cumbria Action for Sustainability	https://cafs.org.uk/cold-to-cosy-homes-cumbria/
Energy Saving Trust	https://energysavingtrust.org.uk/energy-at-home/reducing-home-heat-loss/ https://energysavingtrust.org.uk/business/energy-efficiency/

Food/Diet

Aspect		Description
Objective		To ensure that the Parish and Town Council support all householders, businesses, schools, and farms switch to eating a diet which is more plant-bases and minimises total carbon emissions
Scope	Internal to Council	<ul style="list-style-type: none"> - Parish/Town councillors - Eating on council premises
	External to Council	<ul style="list-style-type: none"> - Support all local householders, businesses, schools etc. to eat a diet which is locally sourced, and more plant-based - Ensure all schools, farms, and households change to a carbon-neutral diet.
Outcome		All people within or passing through the council area eat a carbon-neutral diet wherever and whenever possible.

Sources of information

Organisation	Link
Save Our Shropshire	https://saveourshropshire.org/food
Shropshire Good food Partnership	https://www.shropshiregoodfood.org/
Holme Valley Climate Action Partnership	https://holmevalleyclimateaction.co.uk/actions/agriculture-and-food/
Cumbria Action for Sustainability	https://cafs.org.uk/sustainable-living-guide/sustainable-food/
BBC	https://www.bbcgoodfood.com/howto/guide/what-is-the-planetary-health-diet

Stuff

Aspect		Description
Objective		To ensure that the Parish and Town Council support all householders, businesses, schools, and farms switch to buying in a way that minimises the impact on the planet in what we buy and what we throwaway.
Scope	Internal to Council	<ul style="list-style-type: none"> - Items purchased by the Parish/Town council - Waste created by the Parish/Town council
	External to Council	<ul style="list-style-type: none"> - Support all local householders, businesses, schools etc. to buy items which will last and which do not create a high carbon footprint - Encourage repair, reuse and recycling through the community – e.g. through the creation of a repair cafe
Outcome		All people within or passing through the council area buy in a carbon-neutral way, and do not waste items which will harm the atmosphere.

Sources of information

Organisation	Link
Save Our Shropshire	https://saveourshropshire.org/stuff
Shropshire Council	https://shropshire.gov.uk/shropshire-climate-action/resources/
Holme Valley Climate Action Partnership	https://holmevalleyclimateaction.co.uk/actions/waste-and-resources/
Cumbria Action for Sustainability	https://cafs.org.uk/sustainable-living-guide/sustainable-ethical-shopping-guide/
Time Travel Bee	https://timetravelbee.com/bee-eco/responsible-shopping-guide/
BBC Shop Well for the planet	https://www.bbc.co.uk/food/programmes/m00110g3 (iPlayer 60 minute programme)
Hovingham Project Purple	Information on repair shop etc. https://www.project-purple.org.uk/what-we-do

Business

Aspect		Description
Objective		To ensure that the Parish and Town Council support all businesses to operate in a carbon-neutral way, and buy and sell products which have a carbon-neutral supply chain.
Scope	Internal to Council	<ul style="list-style-type: none"> - Interaction with local businesses and business people in what they buy and sell - Waste created by the Parish/Town council
	External to Council	<ul style="list-style-type: none"> - Support all local businesses to understand and operate in a carbon-neutral manner - Encourage companies supplying business in their area to sell, buy and transport products in a carbon-neutral way
Outcome		All businesses operate in a way that minimises their carbon footprint

Sources of information

Organisation	Link
Shropshire Council	https://shropshire.gov.uk/shropshire-climate-action/business/
Save Our Shropshire	https://saveourshropshire.org/sme-business-course
Holme Valley Climate Action Partnership	https://holmevalleyclimateaction.co.uk/actions/economy-and-business/
Cumbria Action for Sustainability	https://cafs.org.uk/for-businesses/
Cool Shropshire and Telford	http://www.e4environment.co.uk/blog/coolshropshireandtelford/

Countryside

Aspect		Description
Objective		To ensure that the Parish and Town Council support the development of the countryside to protect local wildlife and encourage tree planting to support absorption of Carbon Dioxide
Scope	Internal to Council	<ul style="list-style-type: none"> - Land/recreation sites owned by Parish/Town council - Sites owned by Parish/Town Council
	External to Council	<ul style="list-style-type: none"> - Support all local communities to protect flowers, animals and woodland to support biodiversity - Support development of open land to grow trees which support the absorption of greenhouse gases.
Outcome		Countryside animals, insects, flowers and woodland developed to ensure effective protection of species from adverse effect caused by humans.

Sources of information

Organisation	Link
Save Our Shropshire	https://saveourshropshire.org/country
Shropshire Council	https://shropshire.gov.uk/shropshire-climate-action/nature/
Holme Valley Climate Action Partnership	https://holmevalleyclimateaction.co.uk/actions/environment-and-land-use/
Cumbria Action for Sustainability	https://cafs.org.uk/our-projects/cumbria-green-build-sustainable-living-festival/
Shropshire Wildlife Trust	https://www.shropshirewildlifetrust.org.uk/

Youth


Aspect		Description
Objective		To ensure that the Parish and Town Council support all schools, colleges and universities in their area to operate in a carbon-neutral way, and engage children and young people in learning to live a carbon-neutral lifestyle
Scope	Internal to Council	<ul style="list-style-type: none"> - Interaction with local schools - Interaction with parents
	External to Council	<ul style="list-style-type: none"> - All schools and universities within the geographical area - All youth activities in the area (cubs, scouts, sports activities)
Outcome		All school children grow up being aware of the right things to do to keep the planet carbon-neutral and how to become carbon negative in the future.

Sources of information

Organisation	Link
Save Our Shropshire	https://saveourshropshire.org/future-gens
Cumbria Action for Sustainability	https://cafs.org.uk/our-projects/youth-climate-action/
Bristol Green Capital	https://bristolgreencapital.org/wp-content/uploads/2019/05/30_bristol_method_how_to_engage_and_empower_young_people-1.pdf
Generation Zero Carbon – Shropshire	https://zerocarbonshropshire.org/generation-zero-carbon/

Template Project Plan

Template Project Plan built around the above and other plans. Click on it to open



SAVE OUR SHROPSHIRE CIO PARISH/TOWN COUNCIL TEMPLATE PLAN

	Time	Month1	Month2	Month3	Month4	Month5	Month6	Month7	Month8	Month9	Month10	Month11	Month12	Month13
PHASE OR GROUP	Cost													
- Leadership/Management														
Declare emergency/commitment														
Establish Organisation														
Set up communications														
Establish Monthly meetings														
Create and review plan														
- Measure and Establish footprint														
Calculate Impact tool														
Get a sample audit using tool														
- Education														
Parish Clerk and champions														
All councillors internal course														
Key Householders														
20 % of all hoouseholders														
80 % Of households														
- Energy														
Internal														
Replace lighting with LEDs														
Make energy contract "Green"														
install Solar panels														
Install Air source heat pump														
External														
Support development of Solar/Wind														
Ensure New build based on Green Energy														
Encourage householders to buy green														
Create local energy networks														
- Transport														
Internal														
External														
- Houses/Buildings														
Internal														

Case Study of a village

1. The following video describes a pioneering project to reduce the carbon footprint of a village and is really useful.
2. In the UK, Ashton Hayes, in Cheshire decided to become a zero-carbon community. They managed to reduce the carbon emissions in the village by more than 20% in the first 2 years, mainly through behaviour change.

How Ashton Hayes became first carbon-neutral village

