

Pontesbury Parish Newsletter

February 2024

Issue No: 305

Pontesbury Community Food Growing Project

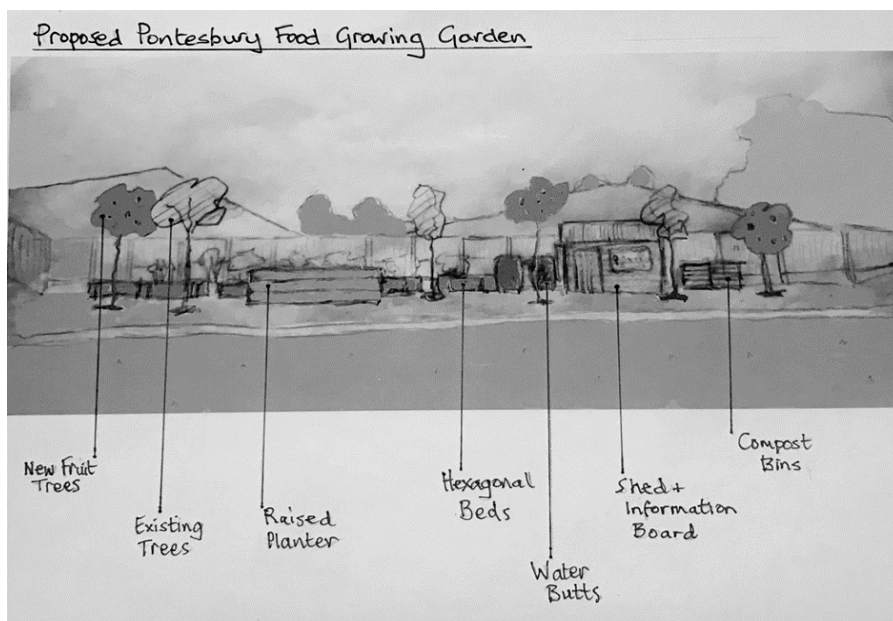
The project, originating from Pontesbury Climate Emergency Action Group, will be sited on the green at Cricketers Meadow, behind the Nursery building.

Work on the site will begin in the spring and we hope as a community project to involve as many people and groups from our area as possible.

Funding has been kindly granted by Pontesbury Parish Council and Save Our Shropshire (www.saveourshropshire.org).

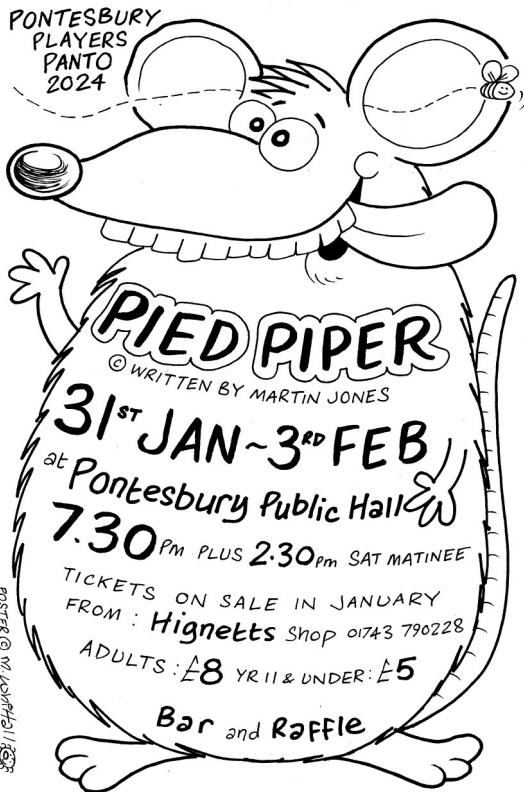
We want to grow healthy sustainably produced food for the community, using volunteer help. There will be an area of raised beds for growing vegetables of all kinds, with fruit bushes and small trees planted behind. Bulbs will be planted to make the area attractive, plus plants that benefit pollinating insects.

Compost bins will recycle waste matter and provide compost for growing, and rainwater will be harvested from guttering from our shed's roof.



There are many reasons why such a scheme can benefit a community. Community growing can provide a good source of healthy food to local people, helping us save money and eat well. Volunteering can provide low impact exercise and improve physical and mental health, as well as encouraging people to join in with a community run scheme. ... / continued on page 2

People from outside the Parish are interested in what's going on in our vibrant villages, so please bring your newsletter back to the Pavilion to be reread. Many thanks



As many of you will be aware Martin Jones sadly died in January. This year's Pantomime, which was written by Martin, will be a time to celebrate his huge contribution to Pontesbury Players

Contents:

- Pg 1 - Community Garden News
- Pg 2 - Pontesbury PC Update
 - Panto poster
- Pg 3 - What's On @ The Pavilion
 - Pontesbury Library Owl
- Pg 4 - Friends of Pontesbury & Library info
- Pg 5 - Pontesbury & Rea Valley
 - Community Good Neighbours News
- Pg 6 - Church service times & events
- Pg 7 - Flicks in the Sticks - Lunana: A Yak in the Classroom
 - Pontesbury Runners
 - Pontesbury & District Gardening Assoc.
- Pg 8 - U3a
 - Pontesbury Potter
 - Snowdrop Walk
- Pg 9 - Pontesbury WI
 - Pontesbury Women's Club
 - World Day of Prayer
 - Rea Valley Probus Meeting Dates
- Pg 10 - Pontesbury Primary School
 - Sports Association
 - Worthen Junior Fixture Dates
- Pg 11- Natural England Notes from Hill
- Pg 12-15 Adverts
- Pg 16 - Dates for your diary - February 2024

Pontesbury Parish Council

January's parish council meeting included a discussion of the 2024-25 parish council budget. A detailed report will be included in the March newsletter. As always there is the need to keep costs down but prepare for future projects and rising costs associated with the services the parish council is responsible for. This year will see the beginnings of two large projects to re-fit the very well-used play area and public toilets. Thank you to those local residents who have come forward to be involved in updating these vital facilities. Another focus this year will be drawing up an action plan to reach carbon net zero by 2030. This is a very ambitious target and will involve rethinking how the council carries out its activities. As well as these larger projects the usual work involved in running The Pavilion and other local services continues.

The next parish council meeting will be held on Monday 12th February, 6.30pm at The Pavilion

The next Planning Committee meeting will be held on Monday 5th February at 6.30pm at the Pavilion. Please contact Deputy Clerk deputy@pontesburypc.org.uk if you would like to attend and/or raise any issues.

If you wish to comment on a planning application please use the Shropshire Council planning portal at <https://pa.shropshire.gov.uk/online-applications/> Or pass your comments through Cllr A Hodges at ahodges@pontesburypc.org.uk. All new planning applications for the area are listed on the parish council website.

... / continued from page 1

For the environment, we will ensure all our produce is sustainably grown so no chemicals will be used as these help to destroy the health of our soil and kill useful pollinating insects. Growing mediums will be 100% peat free and sourced locally. Building materials will be "up-cycled."

Look out for future postings and volunteering opportunities regarding the project, or contact Liz for more information.

(elizabethknowles1@gmail.com)

Deadline for March edition is Monday 12th February - please send all articles, requests for adverts and event dates to deputy@pontesburypc.org.uk

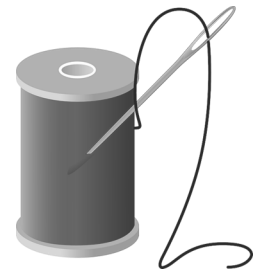


Pavilion News

February 2024 - What's On



We hope to see you at the
'Get Creative groups':



**at The Pavilion from 11am to 1pm on
Thursday 1st, 15th & 29th February 2024**

Drinks and biscuits are provided and there is no charge.

Bring along any project you are working on and have a chat with fellow creators.

Everyone welcome.

Pontesbury Carers Support Group

Last Friday of each month
**Friday 23rd February
2024**

10.30am - 12 noon

**Free to attend, with
refreshments**



**Wednesdays 10-12am –
Sea Change Trust
Family Drop-in & Craft –
FREE Term Time Only**



**Pontesbury Dementia
Support Group**

Alternate Wednesdays in the
Pavilion

**7th & 21st February @
11.30am**



Pontesbury Library Opening hours

Monday	10am -1pm	
Tuesday	10am -1pm	2pm - 5pm
Wednesday	Closed	
Thursday		2pm - 5pm
Friday	Closed	
Saturday	10am -1pm	
Sunday	Closed	



www.shropshire.gov.uk
General Enquiries: 0345 678 9000

A Wintry Sonnet

A Robin said: The Spring will never come,
And I shall never care to build again.

A Rosebush said: These frosts are wearisome,
My sap will never stir for sun or rain.

The beginning of a poem I recently heard, by Christina Rossetti.

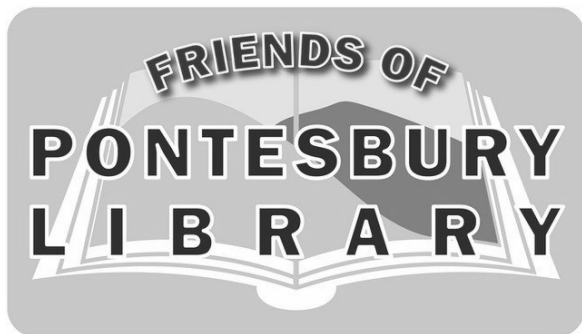
It summed up the feeling for this time of year, but spring will be soon upon us. I never consider myself a poetry fan, but then one catches my attention.

I've put together a little collection in the library, a taster to inspire some, or just to renew your love.

Pontesbury Primary School are taking part in the Shropshire Bookfest awards this year. They were keen to share the book choices with the community, they have made us a nice display board and the Friends of the library have bought the books for the library. They are now available to borrow by anyone interested.

Rhyme Time is at 2pm Thursday 8th February.

For all Pavilion enquiries please contact Anna at: admin@pontesburypavilion.co.uk



News from the Friends of Pontesbury Library

Our new venue for 'Chip it for Charity' in the Ark Nursery car park saw around 40 trees brought for recycling, and over £250 collected to add to the funds. Thanks to Ben Jones of Wood Matters and The Ark for their generous support. The first lottery draw of 2024 helped three lucky winners get the year off to a good start: 1st Pat Frear, 2nd Robert Chambers, 3rd Leah Gwilliam.

If you don't have a standing order for the Library Lottery, now is a good time to pick up a form to join and be in with a chance of winning cash prizes throughout the year, while supporting our wonderful Library. Just visit the Friends website www.pontesburylibrary.co.uk/ (the site is currently being updated), pick up an application form from the Pontesbury Library or email info@pontesburylibrary.co.uk for further information.

The prize is 50% of the Library Lottery income, therefore the more people who subscribe, the higher the prize money. The lottery is £1 per month, with a payment of £12 for the whole year is preferable. That is, £1 per number per month, but you can subscribe with as many numbers as you wish.

Our next big fundraiser, in addition to the regular coffee morning on the first Saturday of each month, will be the annual Plant and Book sale in April. The date will be confirmed in due course, and if you are sowing and planting as the snowdrops and daffodils herald the Spring, please bear in mind that we will welcome donations of any surplus plants and seedlings if you have too many.

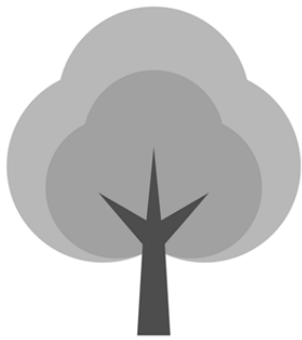


Friends of Pontesbury Library hold a Coffee Morning at the Pavilion on the first Saturday of each month at 10.30.

The next date is Saturday 3rd February.



The next Rhyme Time is on
Thursday
8th February starting at 2pm.



Future Events

For all upcoming events & updates please view our Facebook page.



Coffee Morning - Friday 9th February 2024

10:30am to 12:00pm - Plough Inn
All are welcome to come along.

Next Luncheon Club - Friday 23rd February 2024

11.45am to 1.30pm - Public Hall

Two course lunch for £8 - tickets from Hignett's or coffee mornings at The Plough - entrance with Tickets Only please



The 2023 Christmas Lunch at the Corbet Arms was well attended by over 70 people, a good afternoon was had by all with entertainment from Tom Byrne. *[photos to the left]*

**100 Club Winners
November 2023**

£25	Sarah Smith
£15	Jackie Davies
£10	Kath Sherry

December 2023

£25	Claire Thomas
£15	Chris Sayce
£10	Graham Bromley



St. George's Church
www.st-george.org.uk

Services and activities for February 2024

4th 10.30am Morning Worship
6th 2.30pm Tea Service
11th 10.30am Morning Prayer
13th 7pm (Shrove Tuesday) Beetle Drive
(see poster)
14th 7pm (Ash Wednesday) Holy
Communion
18th 10.30am Holy Communion
25th 10.30am Holy Communion

Pontesbury Congregational Church
Services for February 2024

4th February 10am Deacons
11th February 10am Rev Debbie Martin
18th February 10am Clive Ingleby
25th February 10am Rev Debbie Martin

Wednesdays 10.45 – 12 Noon
Warm Space

Tea and Coffee and Fellowship all are
welcome

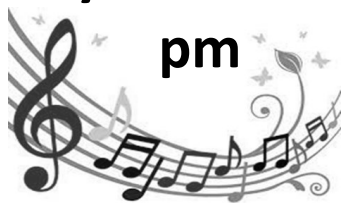
SONGS OF PRAISE

Pontesbury Baptist Church

Chapel Street, Pontesbury, SY5

ORJ

**Sunday 3rd March 6:30
pm**



**Discover the extraordinary stories
behind the hymns!**

With Pastor Mike Wells

Pontesbury Baptist Church

www.pontesburybaptist.co.uk

We have services twice every Sunday – at 10:30 am and
6:30 pm – where we sing hymns of worship, hear the Bible
read, pray, and listen as God's Word is preached.

	10:30 AM	6:30 PM
Sunday 4th Feb	Mike Wells	Mike Wells
Sunday 11th Feb	Rod Ward	Rob Jack
Sunday 18th Feb	Mike Wells	Mike Wells
Sunday 25th Feb	Mike Wells	Martin Wells

Everyone of all ages is very welcome! You don't have to
book ahead, and there's no dress-code - please just come
as you are. We run a creche for toddlers and a Sunday
School for children under the age of 11 during our morning
service.

In addition, every service is streamed live via our church
website, and recordings of previous sermons are available
on the website and our YouTube channel.

If you'd like more information, please email:
info@pontesburybaptist.co.uk

The Methodist Services for the February 2024 are:

4th Feb 10.45am Church Members
11th Feb 10.45am Mrs Helen Pearson
18th Feb 10.45 am Mrs Fay Spencer
25th Feb 10.45 am Church Members

Beetle Drive with Pancakes

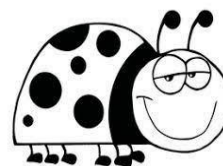
Tuesday 13th February

West End Room

St. George's Church

7pm

£5 per ticket – available from:



Val 790587

Mary 791069

Heather



ADVANCE NOTICE - Pontesbury Congregational Church will be hosting a Table-Top Sale on Sat 20th
April @ 10am -12 Noon. If you would like a table (cost £10) to raise funds for your organisation,
please contact the Church Secretary Tel. 01743 790489 or janewardropper@btinternet.com

Lunana - A Yak in the Classroom

Cert: PG - 109 mins



Fri 16th Feb - 7.30 pm

Marton Village Hall

Admission: Adults: £5 Child: £2.50

Film only £5. Film and Fish & Chips £10. (Fish & Chips must be pre-ordered) Bar and refreshments available from 7.00p.m.
All enquiries to 01743-792790 or 07810-230860.

A teacher, in search of inspiration, travels to the most remote school in the world. Thanks to the enthusiasm of his young students and the unassuming warmth of the village folk, he ends up realising how important his job is and appreciating the value of the yak and its dung.

Starring: Sherab Dorji, Ugyen Norbu Lhendup, Kelden Lhamo Gurung

A Welcome Brew

COMMUNITY DROP-IN

Tuesdays 10.30am - 12pm

A place to come along, grab a drink and have a chat. Free refreshments and activities.



All ages welcome



PONTESBURY RUNNERS

Date - Every Mon

Time - 6.30-7.30pm

Event - Pontesbury Runners (advanced/intermediate runners)

Venue - Corner of Brookside/



PONTESBURY & DISTRICT GARDENERS' ASSOCIATION

The Trading Post re-opens on Saturday 3 February. We are situated in the Old Station Buildings on Station Road and are open every Saturday from 9.30 to 12 noon, from now until the end of October.

We have a good stock of seed potatoes as well as pea, bean and beetroot seeds, onion and shallot sets, plus plenty of all the other materials that you will need to get sowing and growing. The bulk delivery of multi-purpose potting compost has arrived and the usual offer of a reduced price for a multiple purchase is in place; we also have peat-free multi-purpose compost but this isn't on special offer due to the ongoing difficulty in obtaining sufficient supplies. The Government ban on the sale of peat takes place at the end of 2024 so this year could be your opportunity to compare composts with and without peat.

As usual there will be people on hand to help carry the heavy stuff to your car.

Some dates for your diary:

- 5 March: Annual General Meeting, 7.30 pm in the Public Hall
- 16 May: Spring into the Garden, 7.30 pm in the Public Hall
- 19 May: Pontesbury Garden Trail
- 24 August: Annual Show, 2.30 pm in the Public Hall
- 26 October: Last Trading Post open day for 2024.

A reminder: subscriptions for 2024 are now due: they are still £2 for the year, or £1 if you are retired.

Photographer Ric Morris,
Feather & Hay Photography,
presents:

learn,
laugh,
live

A FLIGHT IN THE SNOW



Wednesday 2pm
Minsterley Parish Hall
A488, Minsterley, SY5 OEH

Refreshments available
Free entrance

OPEN MEETING

Members & non-members welcome

u3a Pontesbury
& Rea Valley



u3a Pontesbury
& Rea Valley

Pontesbury & Rea Valley u3a invites members and non-members to come along to our next Open Meeting, for an entertaining presentation by **Ric Morris**, who joins us once again to present his most up to date pictures of snowy Shropshire - taken from a hot air balloon.

Many of you will have enjoyed his presentations before (2022 and 2021) and to experience more beauty of Shropshire from the skies then make sure you 'save the date'.

Refreshments will be served afterwards for the chance to catch up.

u3asites.org.uk/pontesbury-reavalley



Snowdrop Walk



In memory of June Whitaker

Winsley Hall
Westbury
SY5 9HB
10:30am - 4pm

February
17th & 18th
2024

Cakes and refreshments available

Dogs on leads welcome

£5 entry per person (children go free)
Tickets available on the gate and in advance

WWW.LINGENDAVIES.CO.UK/SNOWDROPWALK

 **Severn Hospice**
here and at home



Brush off your boots!

Take part in our 13-mile
sponsored fell walk...

Sign up
now & support
your local
hospice!

16 March 2024

Mary Webb School,
Pontesbury, SY5 0TG



Scan to
sign up!



severnhospice.org.uk/events

Pontesbury WI

Pontesbury WI met on 15th January for the first meeting of the new year. Our guest speaker was Grahame Kerr. Grahame had worked for many years in universities before successfully developing an employment advocacy business, he served for more than 25 years as a magistrate and later, as a lay judge in the Family Courts. His family spent many years associated with Singapore. He is also an accomplished author writing about Singapore. Grahame was a very interesting speaker who told us all about how Singapore has developed taking us back in time to the invasion of Singapore prior to 1942. Everyone really enjoyed his most fascinating talk.

Our hostesses this month were Marion Elliot, Laguna Wright, and Irene Windows who made some delicious cakes. Flower of the month was won by Shona Wood . 2nd Lena Rowson, 3rd Sue Ward. Marion Elliot won the raffle and took home a pretty potted plant.

Our WI meeting next month is on 12th February where we will be holding a Bring and Buy Event. Our guest speaker will be Pam Bolathom talking about Folklore and landscapes of the Welsh Marches.

We meet at Pontesbury Public Hall at 2pm, on the second Monday of each month so why not come and see if you are interested in joining the WI.

The WI Craft Club will be held on 20th February, meeting on the third Tuesday of the month at 10am to 1pm at the Cock Inn Hanwood.

Please contact Irene Windows President on 01743 791903 for further information.

Maxine Pittaway. Events Organiser.



Pontesbury Women's Club

If you would like an entertaining Tuesday evening come along to our meetings

Tuesday 13th February

Michelle Luter will demonstrate how she produces her beautiful glass designs

Tuesday 12th March

Janet Carleton will tell us about the 'Dignity & Freedom Network'

PWC meets at 7.30pm on
The second Tuesday of the month
At Pontesbury Public Hall

Rea Valley Probus Club - 2024 meeting dates

All meetings are at Arscott Golf Club, on the second Wednesday of each month, at 1pm.

14 February 2024	14 August 2024
13 March 2024	11 September 2024
10 April 2024	9 October 2024
8 May 2024	13 November 2024
12 June 2024	11 December 2024
10 July 2024	

WORLD DAY of PRAYER

Prepared by the Christian women
of Palestine

***"I beg you, bear with one
another in love"***
Ephesians 4:1-3



Pontesbury Congregational Church
Friday 1st March 2.30pm

Followed by refreshments

Everyone is very welcome!



In light of the recent conflict
our prayers are particularly needed
at this time



Pontesbury Primary School

Although this is reaching you in the February edition, on behalf of everyone at Pontesbury CE Primary School, Happy New Year.

We are looking for volunteers to listen to and support our pupils as they learn to read. Can you help us by volunteering an afternoon a week? Training will be provided. Subject to a reference and satisfactory DBS check.

We are also looking for the right person to join our cleaning team. If you are interested, please contact the school office 01743 790226 or email admin@ppce.co.uk for further details.

PONTESBURY SPORTS ASSOCIATION On Saturday 13th April the Pontesbury Sports Association will be hosting an open day to show off all the work that has been carried out to the building over the last few months.

It will be a time to celebrate all the Sports that are on offer in our Community Cricket, Football, Rounders & Bowls.

The plan is to showcase all of the above sports allowing people to take part – there will be a rapid Rounders Tournament consisting of teams made up of 5 Women and 5 Men from the age of 12 upwards playing in a knockout tournament.

The Bowling Green will be open and the Bowlers will be looking for new recruits, Ladies and Men's Cricket will be organising something along with the footballers.

There will be a Bar, Barbeque and Music.

Put the date in your diary – more details to follow.

Very Many Thanks

Pontesbury Sports Association would like to thank Sue Sycamore for leaving a legacy in her will. Due to Sue's generosity the sports association have been able to buy a new kitchen for the Sports Pavilion.

Sue lived in the village for over 30 years and was very fond of a game cricket.

Worthen Juniors Men's

Football Fixtures below:

4th February Home Vs Cross Foxes

11th February Away Vs Wem Athletic

All games 10:30 kick off.

Worthen Juniors Football Team would like to thank their sponsors, photos below: Left, The Horseshoes Pub for sponsoring the training kit & Right: Homemaster Relocation for sponsoring the kit. Very many thanks.



NATURAL ENGLAND

Notes from the hill

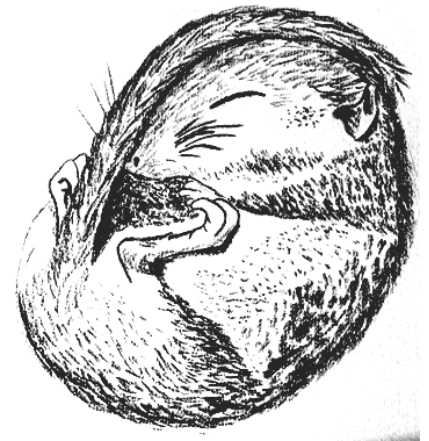
The first 12 species action plans are being launched this month at a conference to be held in Norbury, for more details have a look on the Stepping Stones website. These plans outline some of the actions that are required to help these species, some of them are survey actions, so that we can get a better idea of where they are and how populations are faring. These often involve volunteers so there should be plenty of opportunities to get involved through the species champions or through your local community wildlife group.

Other actions will be related to land management and will highlight ways in which areas of land can be managed to optimise their potential for some of these key species, for example keeping naturally marshy areas wet through the blocking of drains which will help maintain species like snipe and small pearl-bordered fritillary butterflies.

Each month this year I thought that I would focus 'Notes from the Hill' on one of these 12 species, starting with the dormouse, which is the only woodland species in the list, unless you count willow tit.

Dormice are one of our most endearing animals, small, orange fur, with a bushy tail and big dark eyes and a tendency to fall asleep, what's not to love.

The dormouse records for the area are mainly to the east of the Long Mynd and the north and west of the Stiperstones, with most records coming from the Hope Valley. Strangely there are very few records for the Onny Valley and maybe we could do with more people looking for signs in that area. Survey techniques vary but the easiest one is looking for the characteristic discarded hazel nut shells in Autumn. Dormice munch through a lot of hazel nuts at this time of year to fatten up, almost doubling their weight, so that they can hibernate throughout the winter months when food would be scarce. They are nocturnal animals and are rarely seen, so survey techniques rely upon finding signs such as chewed nuts or nests, which are often woven from stripped honeysuckle bark.



Dormice live in woodlands, scrub and thick hedges but need a range of woodland plants and will feed on a variety of nectar, flowers, berries, nuts and insects throughout the warmer months, but to do this they need a woodland with a large range of different trees and shrubs. They live almost entirely in this canopy and rarely come down to the ground, where they would be at risk of being eaten. For this reason, joining up woodlands and connecting them with thick hedges is vital to prevent them from becoming isolated in small woodland pockets. Even in woodlands it is important to have trees spanning across rides so that they can easily cross them.

On the Stiperstones we are trying to diversify the woodlands by encouraging trees other than oaks and birch to regenerate. For example, most of our hazel trees are found on the edges of the reserve, so that is the only place we are finding dormouse signs. We try and keep our main woodlands free of grazing animals and deer both of which can reduce the wildlife value of the woodland.

Dormice require the cold to keep them in hibernation through the winter. As winters become milder with climate change, it could be that our upland woodlands become important as refuges where dormice can continue to survive in the face of this latest threat.

Simon Cooter and the Natural England staff at Rigmoroak





We offer-

- Care for 3 months to school age children.
 - 24U Funding.
 - 15/30 Hours Funding.
- (All staff are first aid trained)

Please contact us if you would like to enquire about sending your child to our nursery.

Contact number: 01743 791540

Email: nursery@arkchildcare.co.uk



Open from 5:30pm – 10pm

Special 4 Course Banquet Night Every Sunday
£15.95 per person

Buffet Night Every Tuesday £15.95

We are closed Mondays except bank holidays

Private Parties can be catered for

01743 3860229

www.leacrosstandoori.co.uk



CHIROPODIST

07598 185 883

Martin Whitfield MRCPod ACC

Podiatrist

Suite 10, Bennetts Business Centre, Pontesbury



**Simplifying Computers
and Technology
across Shropshire**

01743 790968

07971 480036

greg@shroptech.com

Do you still need to upgrade from Windows 7 ? We can

help you upgrade your existing computer to Windows 10 or help you choose a newer one

- Computer repairs
- No fix, no fee
- Upgrades
- SSDs
- Security cameras
- Cloud Storage
- Data Recovery
- Backup Service
- Internet / WiFi problems fixed
- We sell 3 grades of Electronics – “New”, “Open Box” or “2nd User”, all min 1yr warranty
- Smart Phones, Tablets, Laptops, Desktops, TVs, Speakers
- Backup Service

Shropshire Technology is registered with the ICO for the Data Protection Act 1998 – your data is safe with us



You could see an advert for your company in this newsletter.

If you would like to advertise your business in the Pontesbury Parish Newsletter please get in touch with Nicki, deputy@pontesburypc.org.uk. The costs of advertising depend upon the size of the advertisement and where you live, if you live within the Pontesbury parish you get a discount.

You can advertise for one month, or a full year of 11 months (there is one newsletter for December/January).



HIGNETT'S of PONTESBURY Ltd.

Established 1919

Retailers of Quality Foods
Fresh Meat, Fruit & Vegetables
Fresh Bread, Pies and Buns

A range of Sausages and Burgers made to our own recipes
Fresh Flowers and Plants
Groceries at Competitive prices



01743 790228 www.hignetts.co.uk



Martin Walters High Quality Traditional Joiner

...
Doors
Sash and Casement Windows
Stairs and Continuous Handrail
Furniture
Arched and Curved work
...
Joinery Repairs
Splicing
Replacement Sash Cording,
Pulleys, Fasteners and
Ironmongery
...
Upgrades
Draught Exclusion
Double Glazing
...
25 years trade experience
...
Free consultation and quote
Telephone: 07813 477720
E-mail:
martin.walters@phonecoop.coop

Physiotherapy and Acupuncture Pontesbury

01743 872375

01743 790036

Contact us for prompt assessment & treatment.

We aim to alleviate pain & restore normal function to joints, muscles and nerves to improve your quality of life.

Private Occupational Therapy service also available.

Helen Mitchell BSc MCSP HCPC
Olwen Lethbridge MCSP AACP HCPC

Marc Simms Painting and Decorating

All interior and exterior
work undertaken
Local, professional and
efficient service

Call Marc on
07875 168744



Malehurst Industrial Estate, Malehurst, Pontesbury, SY5 0EQ

Modern Industrial Buildings To Let –
Various Sizes Available

Ideal For Start Up or Existing Businesses
Modern Insulated Units
Self Storage Units & Outside Storage Also Available

Telephone 01743 791744
mark@malehurstindustrialestate.co.uk
www.malehurstindustrialestate.co.uk

Wombrook Home Maintenance

Improvements, repairs and maintenance,
in and around the home.

Decorating. Tiling.
Carpentry. Plumbing.
Kitchens. Bathrooms.
Fences.

Odd jobs & more.

All work is fully guaran-
teed and insured.
References willingly supplied – just ask.
Call Steve Percival: 01743 860712
0794 0894 378



RJD BRICKWORK SERVICES

All aspects of Brickwork and Stonework
Garden Walls
Brickwork for Extensions and New Builds
Renovation work
Fireplaces

Time served bricklayer with 30 years experience
Full Public liability insurance

Tel: 01743 821507 Mob: 07740607064
Email: info@r-j-d.co.uk

Free consultation and quote



Boiler service, breakdown and installation

Landlord's gas safety certificates

And all plumbing work

Telephone: 07974 268627

email: info@richardhornerplumbingandheating.co.uk

website: richardhornerplumbingandheating.co.uk



Company number 8612915

Val No. 899 787 414



Mr Wasp Pest Control Services

* Professional Local Service

* Unmarked Vehicle

* Service Contracts Welcome

* Rats * Mice * Squirrels

* Wasps * Fleas * Insects

* Domestic & Commercial

Tel: 07908 205881

www.mrwasp.biz info@mrwasp.biz



Ben Morris Electrical Ltd

ELECTRICAL CONTRACTOR

NAPIT & TRUSTMARK registered



BEN :- 07966 788791

QUOTATIONS:- [JOHN] 01743 792013

www.benmorriselectrical.co.uk

REWIRES / UPDATES
EICR TEST REPORTS / FAULT FINDING
FUSE BOARD UPGRADES
EXTRA SOCKETS / LIGHTS ADDED
ELECTRICAL HEATING SYSTEMS
PART 'P' REGISTERED
COMPETITIVE HOURLY / DAILY RATES
ESTABLISHED 2007
VAT FREE

Metal Recycling

Recycle your old scrap metal

- Brass, copper, lead, cable, batteries
- Cast, cars, vans, farm scrap, old central heating systems

Call: 07989 050276
or 01743 791493



ZUMBA®

CLASS

Monday's + Thursday's

Monday's @ Worthen Village Hall
7.30pm [2nd Monday of the month @
Westbury Village Hall]

Thursday's @ Minsterley Village Hall
6.30pm

With Grace P £5 per class. No need to book

PHIL GRIFFITHS

Local Plumber

Tap Replacement and
Plumbing Repairs undertaken

New Taps supplied and fitted

Full Range available

Established for 35 years

Tel: 01743 790046

Mobile: 07970 010148



Deadline for submissions to the March issue of Pontesbury Newsletter is Monday 12th February - please email deputy@pontesburypc.org.uk



**It's not just a job
It's a Career**



“
Spending time with my residents and
doing fun activities with them is the best!
It doesn't feel like a job and my
confidence has increased so much while
being here
JACK ZEILER Support Worker

Various roles available visit
our website today

📞 01743 872250

📧 recruitment@condovercl.org.uk



APPLY TODAY

Painter & Decorator

DWS Property Services

**All interior & Exterior
Work / Fully Insured /
Free Competitive
Estimates**

dugloussteele@hotmail.com

07860 528943

J.D.E Josh Dyson Electrical

Fully qualified electrician - no job too small

Quality work at competitive prices. Fully insured and vat free

Domestic, industrial, commercial, agricultural, renewable

Please contact 07590 557436 for a free quote or

email: josh@jdelectrical.net

Facebook: Josh Dyson Electrical

Instagram: jdelectrical1



Mobile Hairdressing by Sue

Have your hair done in the
comfort of your own home - hair
colours restyles / blow dries and
family hair cuts.

Stylist with over 35 experience at
competitive prices .

Please telephone or message Sue
on 07977 654403



Available for Private Hire



Meetings, Weddings,
Christenings, Birthdays
Wakes, Private Dining

Visitors always welcome

Give us a call on 01743 860881

Or email bar@arscottgolfclub.co.uk

Arscott Golf Club, Arscott, Pontesbury, SY5 0XP

We're the Which? Insurance Brand of the Year for the second year running

Whether it's for your car, home, farm or
business, for quality insurance you can
rely on, join us today.

Contact NFU Mutual Shrewsbury
on **01743 344 743**



NFU Mutual
INSURANCE | PENSIONS | INVESTMENTS

S L Latter & M D Shepherd is an appointed representative of The National Farmers Union Mutual Insurance Society Limited (No. 111982).
Registered in England. Registered Office: Tiddington Road, Stratford-upon-Avon, Warwickshire, CV37 7BJ.

FEBRUARY 2024 DIARY

Date	Time	Event	Venue
Every Mon	6.30-7.30	Pontesbury Runners (advanced/intermediate runners)	Meet corner of Brookside & Minsterley Road
Every Tue	10am to 1200	Rea Valley Foodbank	Holy Trinity Minsterley
Every Tue	10.30am-1200	A Welcome Brew	Baptist Church
Every Tue	2pm	Tai Chi	Public Hall
Every Wed	1000-1200	Sea Change Drop-In for parents/carers of under 5s - free session with refreshments	Pavilion - Term-time only
Every Thu	1000-1200	Rea Valley Foodbank	St George's Church
Every Thu	7-9pm	Badminton Club	Mary Webb School
Every Fri	1000	Walking Local Footpaths	Meet at School Green
31st Jan 2024 to 3rd Feb 2024	Various times	PONTESBURY PLAYERS PANTOMIME - PIED PIPER Oh Yes It Is!!	Public Hall
Thu 1st, 15th & 29th	1100	Get Creative Group - free, refreshments provided	Pavilion
Sat 3rd	9.30am	Pontesbury & District Gardening Association Re-opens	Trading Post, Station Road
Sat 3rd	10.30am	FoPL Coffee Morning	Pavilion / Library
Mon 5th	6.30pm	Pontesbury Planning Committee Meeting	Pavilion
Thu 8th	2pm	Rhyme Time	Pavilion / Library
Fri 9th	1030-1200	Good Neighbour's Coffee Morning	The Plough Inn
Mon 12th	2pm	Pontesbury WI	Public Hall
Mon 12th	7pm	Pontesbury Parish Council Meeting	Pavilion
Tue 13th	7pm	St George's Church Beetle Drive with Pancakes	West End Room, St George's
Tue 13th	7.30pm	Pontesbury Women's Club	Public Hall
Wed 14th	1pm	Rea Valley Probus Club	Arscott Golf Club
Fri 16th	7.30pm	Flicks in the Sticks - Lunana: A Yak in the Classroom	Marion Village Hall
Sat 17th & Sun 18th	10.30am	Snowdrop Walk	Winsley Hall, Westbury
Wed 21st	2pm	u3a - A Flight in the Snow	Minsterley Parish Hall
Fri 23rd	10,30 - 1200	Pontesbury Carer's Support Group	Pavilion
Fri 23rd	1145- 1300	Good Neighbour's Luncheon Club	Public Hall
Fri 1st Mar	2.30pm	Word Day of Prayer	Pontesbury Congregational Church
Sun 3rd Mar	6.30pm	Songs of Praise	Pontesbury Baptist Church

Closing Date for submissions for March 2024 edition of Pontesbury Parish Newsletter is Monday 12th February 2024. Please send all articles to deputy@pontesbury.pc.org.uk.

Please use the same email address if you would like to advertise and we will send you a form.